

**DETTAGLI**  
- 3 tasche  
- Martingala

**TAGLIE**  
XS ÷ XXL  
Regular Fit

**COLORE**  
00 Bianco

**TESSUTO**  
100% cotone  
185 g / m<sup>2</sup>



Le misure indicate si riferiscono alle taglie **S** per i capi femminili, **L** per i capi maschili. Per i capi a taglia unica le misure indicate sono effettive.

## COLORI DISPONIBILI



00 Bianco

TABELLE TAGLIE  
E CORRISPONDENZE

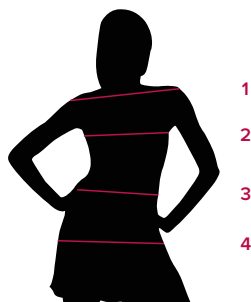
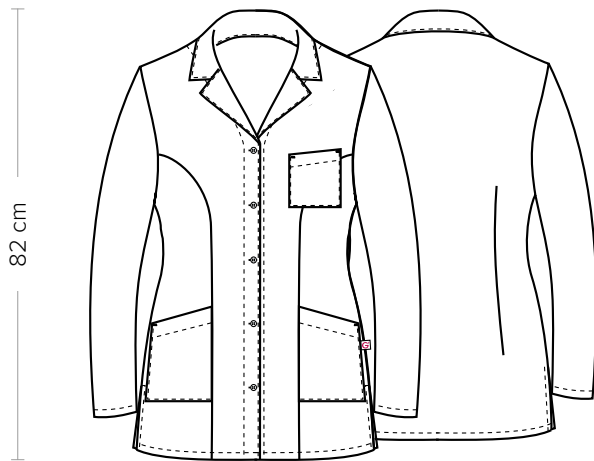


TABELLA ST-K2 REGULAR FIT								
TAGLIA	XS	S	M	L	XL	XXL	XXXL	4XL
1 - SPALLE								
2 - CIRCONFERENZA TORACE	87-91	92-95	96-99	100-105	106-114	115-120	121-131	121-141
3 - CIRCONFERENZA VITA	76-80	81-84	85-88	89-94	95-105	106-116	117-131	117-143
4 - CIRCONFERENZA BACINO	96-100	101-104	105-108	109-114	115-122	123-131	132-142	142-160

**GUIDA ALLE TAGLIE** **1)** Prendere le misure anatomiche (corpo con abbigliamento intimo) senza stringere mantenendo ben teso il metro. **Nota:** nel caso vogliate indossare dei camici già con dell'abbigliamento sotto prendete le misure già abbigliati. **2)** Nel caso tra le misure prese vi fosse una misura a cavallo fra 2 taglie vi consigliamo di prendere quella più grande. **3)** Le misure della tabella sono espresse in centimetri.



**DETAILS**

- 3 pockets
- Half belt on the back

**SIZES**

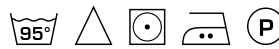
XS ÷ XXL  
Regular Fit

**COLOURS**

00 White

**FABRIC**

100% cotton  
185 g / m<sup>2</sup>



The measures indicated refer to sizes **S** for women, **L** for men. For one-size-fits-all garments, the measurements indicated are effective.

**AVAILABLE COLOURS**



00 White

**SIZE TABLES  
AND CORRESPONDENCES**

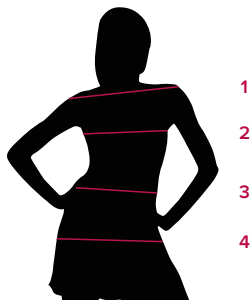


TABLE ST-K2 REGULAR FIT								
SIZE	XS	S	M	L	XL	XXL	XXXL	4XL
1 - SHOULDERS								
2 - CHEST CIRCUMFERENCE	87-91	92-95	96-99	100-105	106-114	115-120	121-131	121-141
3 - WAIST CIRCUMFERENCE	76-80	81-84	85-88	89-94	95-105	106-116	117-131	117-143
4 - HIPS CIRCUMFERENCE	96-100	101-104	105-108	109-114	115-122	123-131	132-142	142-160

**SIZE GUIDE** **1)** Take the anatomical measurements (body with underwear) without tightening, keeping the measuring tape taut. Note: in case you want to wear of the gowns already with the clothing underneath take the measurements already dressed. **2)** If there is a measure between 2 sizes between the measurements taken, we advise you to take the bigger one. **3)** The measurements in the table are expressed in centimeters.