

DETTAGLI

- Bottoni estraibili
- Taschino portapenne sulla manica

TAGLIE

XS ÷ 5XL
Comfort Fit

COLORE

00 Bianco

TESSUTO

100% cotone
185 g / m²



Le misure indicate si riferiscono alle taglie **S** per i capi femminili, **L** per i capi maschili. Per i capi a taglia unica le misure indicate sono effettive.

Giacca cuoco doppio petto bottoni estraibili.

COLORI DISPONIBILI



00 Bianco

TABELLE TAGLIE
E CORRISPONDENZE

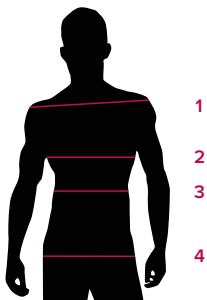
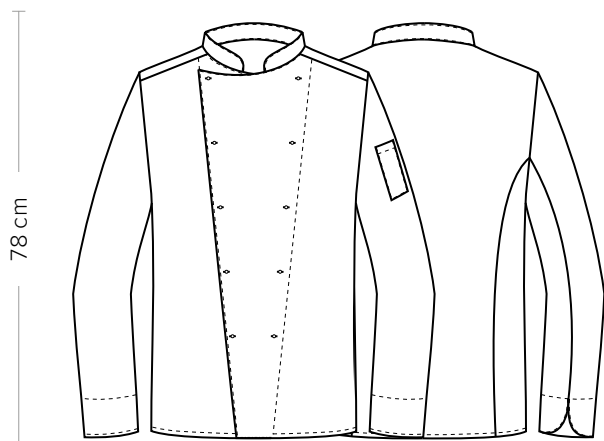


TABELLA ST-G2 COMFORT FIT

TAGLIA	XS	S	M	L	XL	XXL	XXXL	4XL
1 - SPALLE	43	44	45	47	49	51	53	55
2 - CIRCONFERENZA TORACE	98-102	103-106	107-110	111-116	117-124	125-132	133-140	141-148
3 - CIRCONFERENZA VITA	94-98	99-102	103-106	107-112	113-120	121-128	129-136	137-144
4 - CIRCONFERENZA BACINO	95-99	100-103	104-107	108-113	114-121	122-129	130-137	138-145

GUIDA ALLE TAGLIE **1)** Prendere le misure anatomiche (corpo con abbigliamento intimo) senza stringere mantenendo ben teso il metro. **Nota:** nel caso vogliate indossare dei camici già con dell'abbigliamento sotto prendete le misure già abbigliati. **2)** Nel caso tra le misure prese vi fosse una misura a cavallo fra 2 taglie vi consigliamo di prendere quella più grande. **3)** Le misure della tabella sono espresse in centimetri.



DETAILS

- Removable buttons
- Pen pocket on sleeve

SIZES

XS ÷ 5XL
Regular Fit

COLOURS

00 White

FABRIC

100% cotton
185 g / m²



The measures indicated refer to sizes **S** for women, **L** for men. For one-size-fits-all garments, the measurements indicated are effective.

Double-breasted chef jacket with removable buttons.

AVAILABLE COLOURS



00 White

SIZE TABLES
AND CORRESPONDENCES

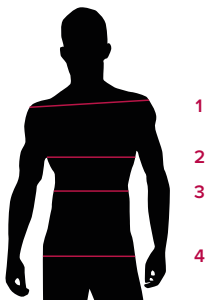


TABLE ST-G2 COMFORT FIT								
SIZE	XS	S	M	L	XL	XXL	XXXL	4XL
1 - SHOULDERS	43	44	45	47	49	51	53	55
2 - CHEST CIRCUMFERENCE	98-102	103-106	107-110	111-116	117-124	125-132	133-140	141-148
3 - WAIST CIRCUMFERENCE	94-98	99-102	103-106	107-112	113-120	121-128	129-136	137-144
4 - HIPS CIRCUMFERENCE	95-99	100-103	104-107	108-113	114-121	122-129	130-137	138-145

SIZE GUIDE **1)** Take the anatomical measurements (body with underwear) without tightening, keeping the measuring tape taut. Note: in case you want to wear of the gowns already with the clothing underneath take the measurements already dressed. **2)** If there is a measure between 2 sizes between the measurements taken, we advise you to take the bigger one. **3)** The measurements in the table are expressed in centimeters.