

**DETTAGLI**

- 2 tasche
- 1 tasca sul retro
- Elastico e coulisse

**TAGLIE**

XS ÷ 5XL  
Slim Fit

**COLORE**

00 Bianco

**TESSUTO**

100% cotone  
185 g / m<sup>2</sup>



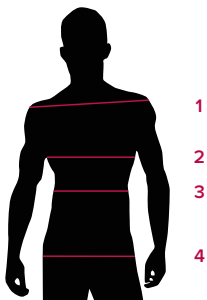
Le misure indicate si riferiscono alle taglie **S** per i capi femminili, **L** per i capi maschili. Per i capi a taglia unica le misure indicate sono effettive.

Grande classico Giblor's: pantalone unisex a vita alta, dall'ottima vestibilità, amato per il taglio asciutto della gamba.

**COLORI DISPONIBILI**

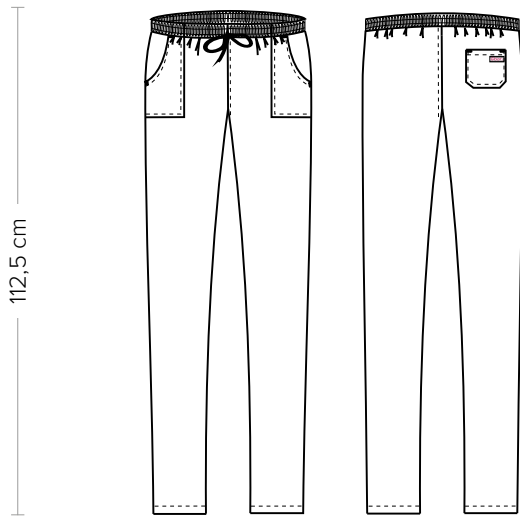
00 Bianco

TABELLE TAGLIE  
E CORRISPONDENZE

**TABELLA ST-P2 SLIM FIT**

TAGLIA	XXS	XS	S	M	L	XL	XXL	XXXL	4XL	5XL
1 - SPALLE										
2 - TORACE										
3 - VITA	68-72	73-77	78-82	83-87	88-94	95-101	102-108	109-115	117-123	124-129
4 - BACINO	87-91	92-95	96-99	100-103	104-108	109-114	115-120	121-126	127-133	134-139

**GUIDA ALLE TAGLIE** **1)** Prendere le misure anatomiche (corpo con abbigliamento intimo) senza stringere mantenendo ben teso il metro. **Nota:** nel caso vogliate indossare dei camici già con dell'abbigliamento sotto prendete le misure già abbigliati. **2)** Nel caso tra le misure prese vi fosse una misura a cavallo fra 2 taglie vi consigliamo di prendere quella più grande. **3)** Le misure della tabella sono espresse in centimetri.



**DETAILS**

- 2 pockets
- 1 rear pocket
- Elasticated waistband with drawstring

**SIZES**

XS ÷ 5XL  
Slim Fit

**COLOURS**

00 White

**FABRIC**

100% cotton  
185 g / m<sup>2</sup>



The measures indicated refer to sizes **S** for women, **L** for men. For one-size-fits-all garments, the measurements indicated are effective.

Giblor's great classic: unisex high-waisted trousers with an excellent fit, loved for the slim fit of the leg.

**AVAILABLE COLOURS**



00 White

**SIZE TABLES AND CORRESPONDENCES**

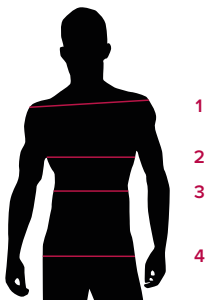


TABLE ST-P2 SLIM FIT										
SIZE	XXS	XS	S	M	L	XL	XXL	XXXL	4XL	5XL
1 - SHOULDERS										
2 - CHEST										
3 - WAIST	68-72	73-77	78-82	83-87	88-94	95-101	102-108	109-115	117-123	124-129
4 - HIPS	87-91	92-95	96-99	100-103	104-108	109-114	115-120	121-126	127-133	134-139

**SIZE GUIDE** **1)** Take the anatomical measurements (body with underwear) without tightening, keeping the measuring tape taut. Note: in case you want to wear of the gowns already with the clothing underneath take the measurements already dressed. **2)** If there is a measure between 2 sizes between the measurements taken, we advise you to take the bigger one. **3)** The measurements in the table are expressed in centimeters.