

**DETTAGLI**  
- 3 tasche  
- Polsino con bottone

**TAGLIE**  
XS ÷ XXXL  
Regular Fit

**COLORE**  
00 Bianco

**TESSUTO**  
100% cotone  
185 g / m<sup>2</sup>



Le misure indicate si riferiscono alle taglie **S** per i capi femminili, **L** per i capi maschili. Per i capi a taglia unica le misure indicate sono effettive.

## COLORI DISPONIBILI



00 Bianco

TABELLE TAGLIE  
E CORRISPONDENZE

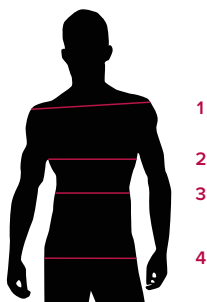


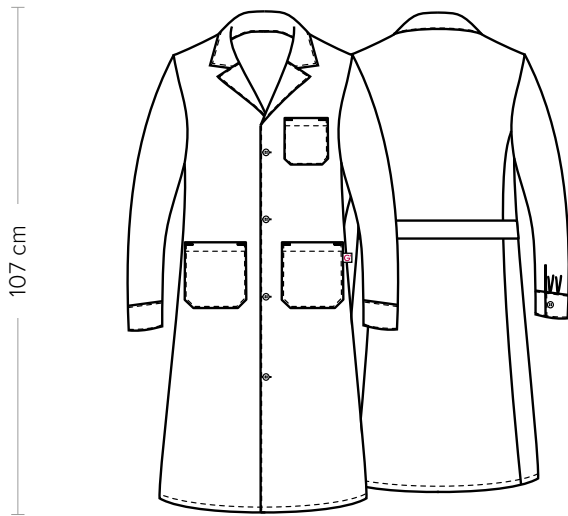
TABELLA ST-R5 REGULAR FIT							
TAGLIA	XS	S	M	L	XL	XXL	XXXL
1 - SPALLE	45	46	47	48,5	50	52	54
2 - CIRCONFERENZA TORACE	90-94	95-98	99-102	103-106	107-112	113-120	121-128
3 - CIRCONFERENZA VITA	81-85	86-89	90-93	94-97	98-104	105-114	115-124
4 - CIRCONFERENZA BACINO	88-92	93-96	97-100	101-104	105-111	112-120	121-128

**GUIDA ALLE TAGLIE** **1)** Prendere le misure anatomiche (corpo con abbigliamento intimo) senza stringere mantenendo ben teso il metro. **Nota:** nel caso vogliate indossare dei camici già con dell'abbigliamento sotto prendete le misure già abbigliati. **2)** Nel caso tra le misure prese vi fosse una misura a cavallo fra 2 taglie vi consigliamo di prendere quella più grande. **3)** Le misure della tabella sono espresse in centimetri.

# ETHAN

ITEM CODE  
10M1315

**Giblor's**  
italian work/life specialist



**DETAILS**  
- 3 pockets  
- Cuff with button

**SIZES**  
XS ÷ XXXL  
Regular Fit

**COLOURS**  
00 White

**FABRIC**  
100% cotton  
185 g / m<sup>2</sup>



The measures indicated refer to sizes **S** for women, **L** for men. For one-size-fits-all garments, the measurements indicated are effective.

## AVAILABLE COLOURS



00 White

SIZE TABLES  
AND CORRESPONDENCES

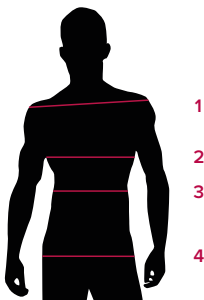


TABLE ST-R5 REGULAR FIT							
SIZE	XS	S	M	L	XL	XXL	XXXL
1 - SHOULDERS	45	46	47	48,5	50	52	54
2 - CHEST CIRCUMFERENCE	90-94	95-98	99-102	103-106	107-112	113-120	121-128
3 - WAIST CIRCUMFERENCE	81-85	86-89	90-93	94-97	98-104	105-114	115-124
4 - HIPS CIRCUMFERENCE	88-92	93-96	97-100	101-104	105-111	112-120	121-128

**SIZE GUIDE** **1)** Take the anatomical measurements (body with underwear) without tightening, keeping the measuring tape taut. Note: in case you want to wear of the gowns already with the clothing underneath take the measurements already dressed. **2)** If there is a measure between 2 sizes between the measurements taken, we advise you to take the bigger one. **3)** The measurements in the table are expressed in centimeters.

**GIBLORS.COM**